

North Waipā – South Hamilton Spatial Study

Scenario Five: Environmental gateway By 2040

Infrastructure



Transport

Hamilton Southern Links staged with active mode corridors integrated; early Bus Rapid Transit planning underway, prioritising low-carbon travel.



Water

Southern Wastewater Treatment Plant first stages operational and energy-efficient; stormwater managed via green infrastructure.



Social

Community hubs integrate libraries, health, and open spaces; strong focus on outdoor recreation.

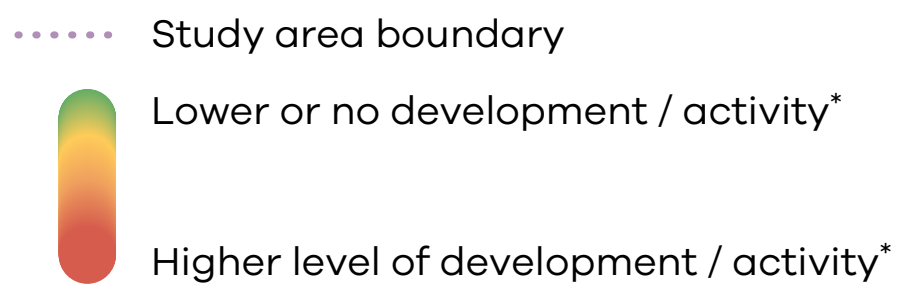


Environment

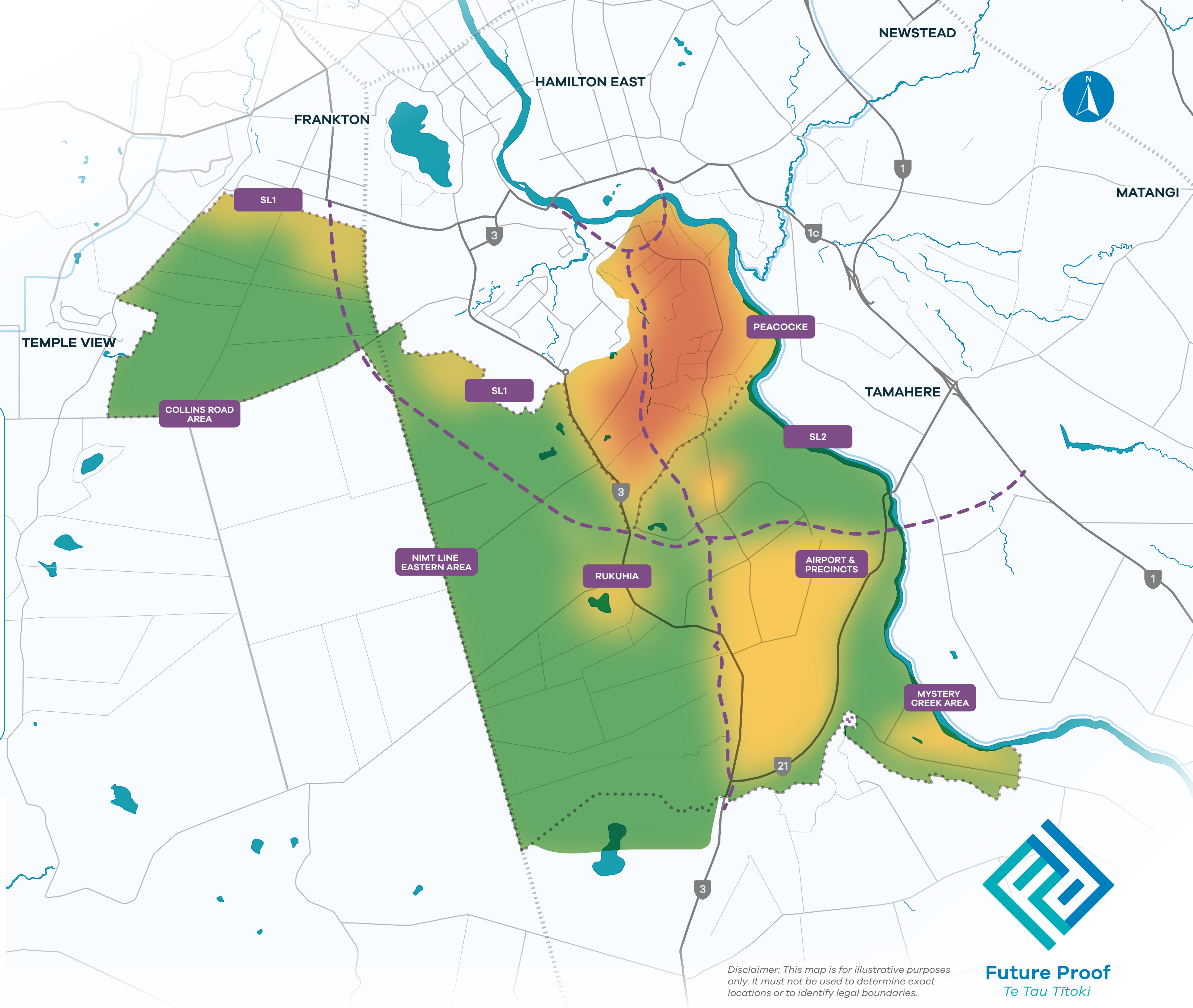
Blue-green network continuous; strong water-sensitive design and cultural restoration.

Legend

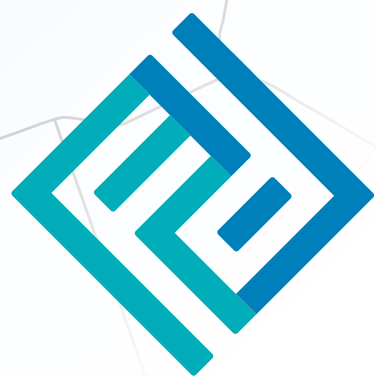
- District lines
- State Highways
- Waikato River
- Railway
- Hamilton Southern Links designation



*Level of residential, industrial, or commercial development or activity compared to the 2025 baseline.



Disclaimer: This map is for illustrative purposes only. It must not be used to determine exact locations or to identify legal boundaries.





Future Proof
Te Tau Titoki


North Waipā – South Hamilton Spatial Study


Scenario Five: Environmental gateway By 2055

Infrastructure


**Transport**
Bus Rapid Transit scaled up with strong patronage; early freight rail construction supports eco-focused network.


**Water**
Full reticulation with recycled and harvested water; environmental thresholds drive design.


**Social**
Education and cultural centres co-designed with iwi; green infrastructure doubles as social space.


**Environment**
River health targets achieved; Increased investments into Te Ture Whaimana planning and delivery.


Legend


 District lines


 State Highways

 Waikato River

 Railway

 Hamilton Southern Links designation

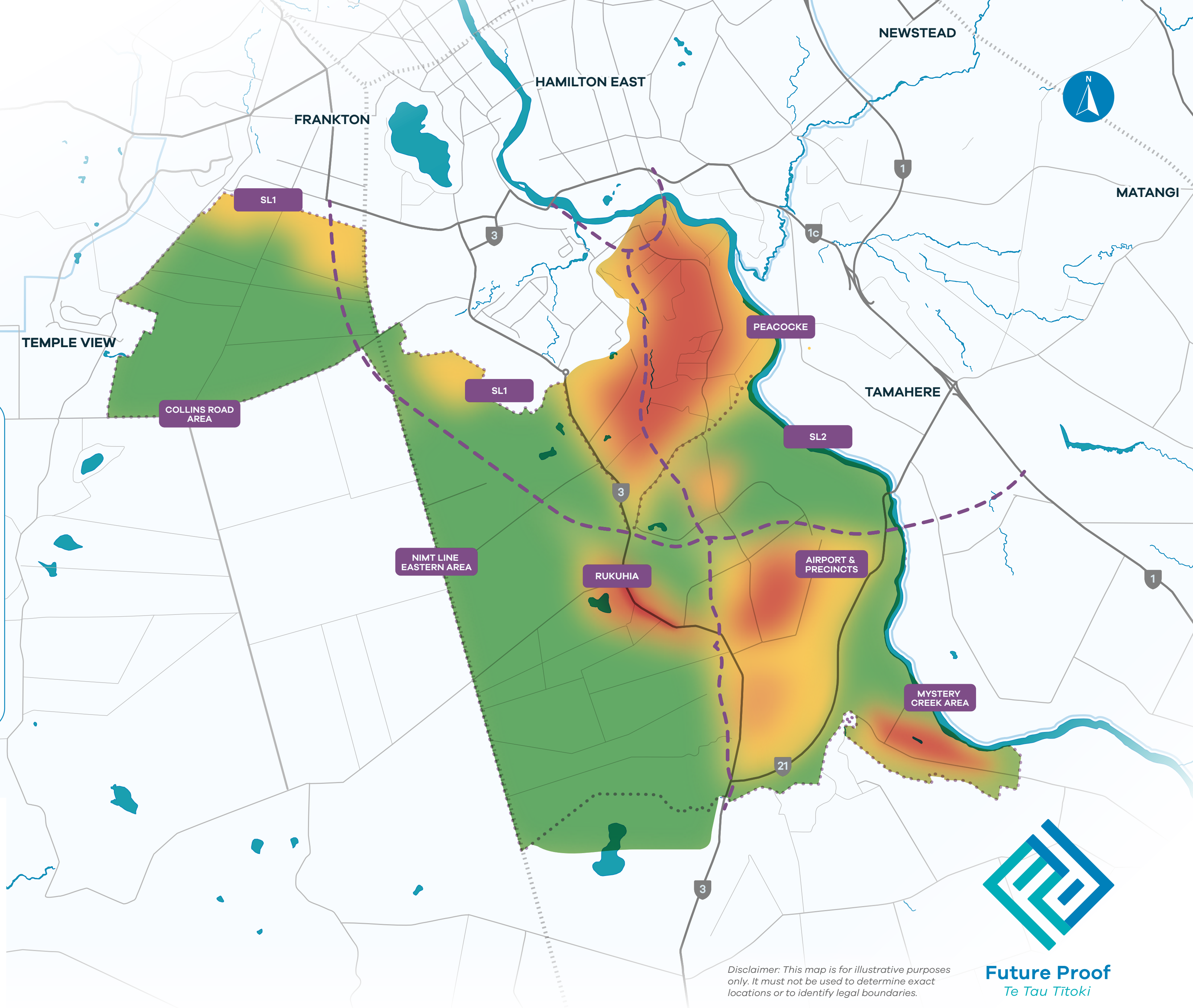
 Study area boundary



Lower or no development / activity*

Higher level of development / activity*

*Level of residential, industrial, or commercial development or activity compared to the 2025 baseline.



Disclaimer: This map is for illustrative purposes only. It must not be used to determine exact locations or to identify legal boundaries.



Future Proof
Te Tau Titoki